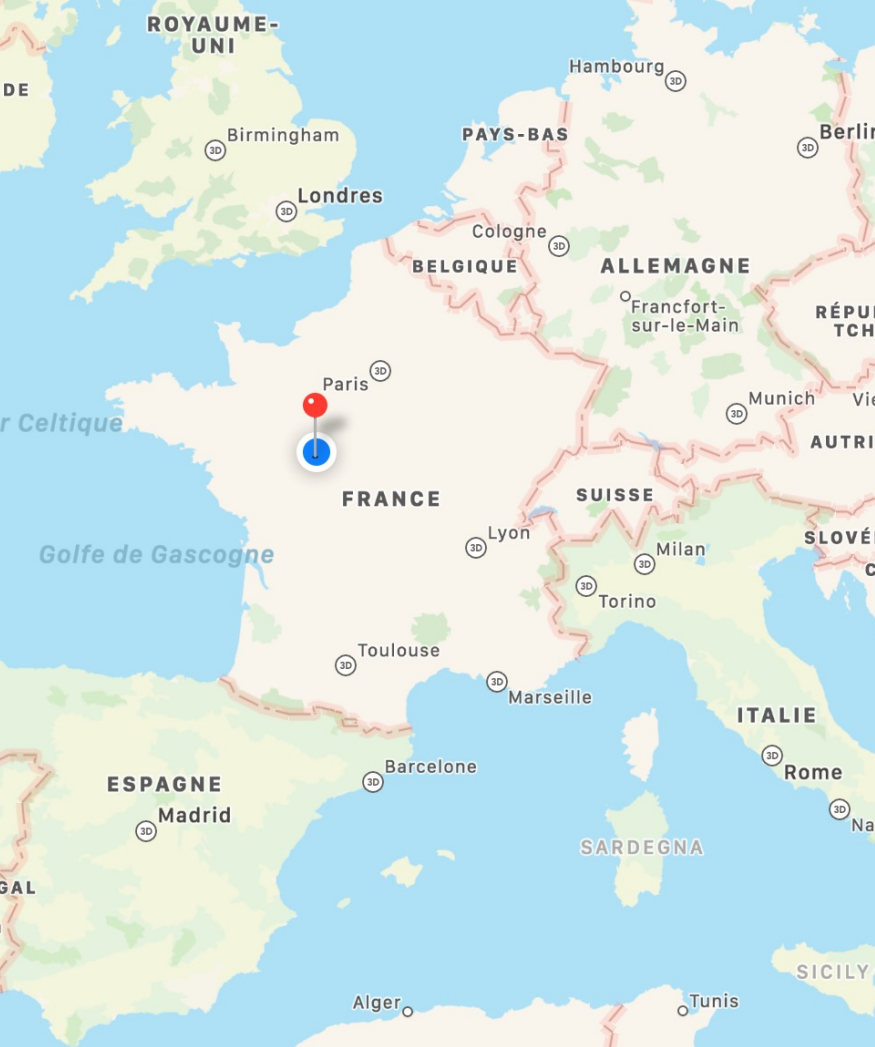




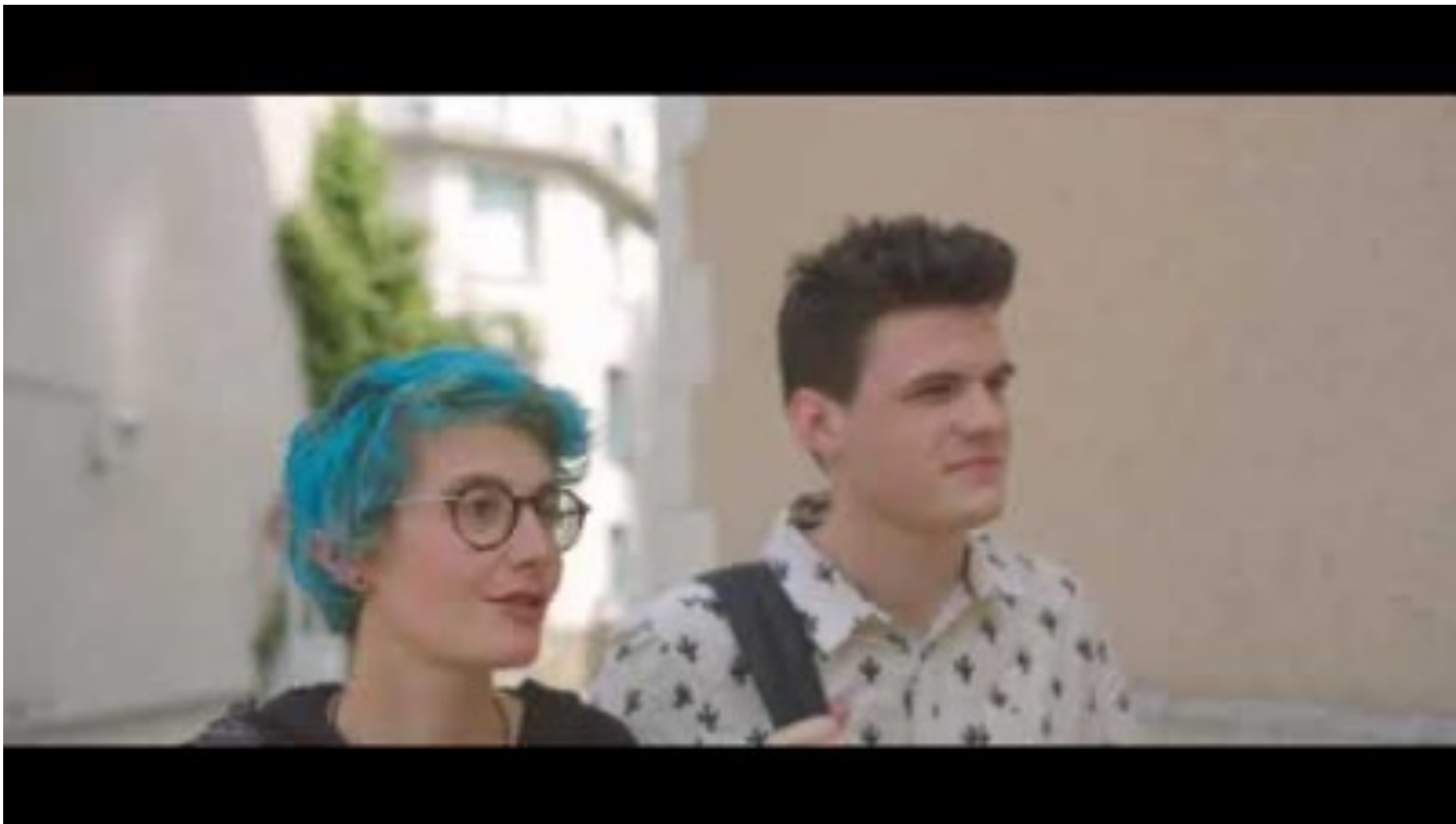
Come to France for your
semester abroad in science !

Bachelor's and Master's engineering degrees





Tours and Blois in France, near Paris (1h by high speed train)



UT fact sheet

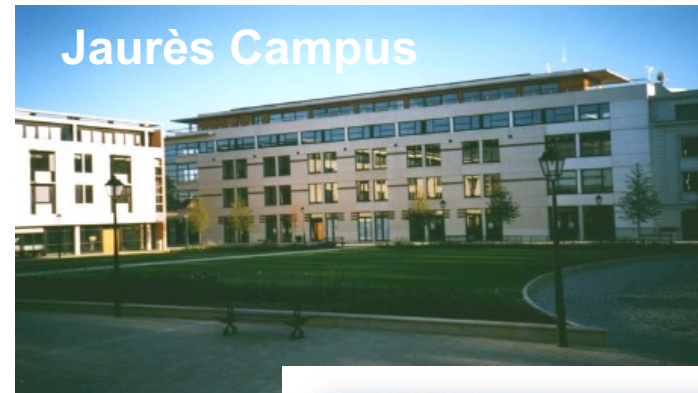
To help you choose the best time to study at UT

Term Dates	Autumn Semester: 4,5 months (September to mid January) Spring Semester: 5 months (mid January to mid June)
Expected arrival dates for exchange students	Autumn Semester: Before September 3 ^d 2021 Spring Semester: Before January 08 th 2022
Welcome Program	Autumn Semester: First week of September 2021
Classes begin/end:	Autumn Semester: September 1 st to January 20 th 2021 Spring Semester: January 21 th to mid June 2022
Holidays	Summer : approximately two months (Jul-Aug) Autumn: one week (Oct-Nov) Christmas: 2 weeks (Dec-Jan) Winter: 1 week (Feb) Spring : 2 weeks (Apr-May)
Application Deadline	Nomination deadline for the Autumn semester : May 15 th Online applications for the Autumn semester or the Academic Year: May 31 st Nomination deadline for the Spring semester: November 15 th Online applications for the Spring semester: November 29 th



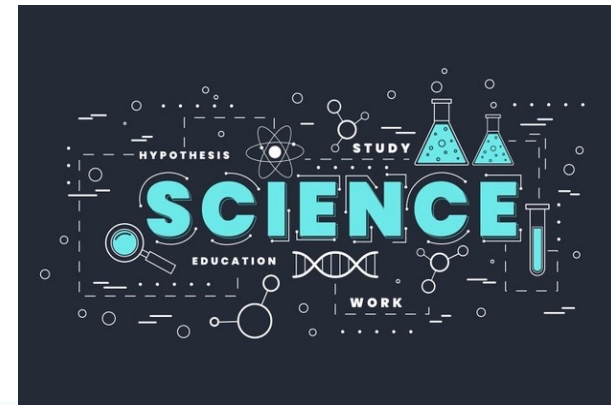
A quick overview

- 552** étudiants
- 82 apprentices
- 43 international students
- 4 Full BTech degrees
- 2 one-year BTech specializations
- 1 technology transfer platform
- 3 research laboratories
- 2 sites



Undergraduate Technology Studies

- Three departments dedicated to sciences
 - **Applied Sciences and Measurements**
 - **Materials Science**
 - **Networks and Telecoms**
- Program with 50% hands-on training, 50% academic courses
- National BTech degree after 3 years of studies
 - National network with 24 different degrees
- Similar to a Japanese Kosen, but in the **University**



Undergraduate Technology Exchanges

- Semester exchange - 80% of programs are taught in French
 - B2 level in French
 - SIT nominating procedure
- Short term exchange for 1-3 months
 - In-fill in appropriate courses taught in English
 - Project and/or research work in English
 - Supervised by researchers or teaching staff



Graduate School of Engineering



1 300 students

Accredited by national engineering agency (CTI)

5 engineering departments

3 or 5 year cursus

100 faculty members

5 associated labs

Platforms for technology transfer

International programs

Industrial partnerships



<https://polytech.univ-tours.fr/english-version>

- 15 graduate schools of engineering
- 12 scientific fields
- 100+ majors
- A network of 90 000+ Polytech alumni
- 3 800 graduates every year

Our Values

- Respect and Openness
- High standards and Creativity
- Responsibility and Transparency
- Forward thinking and team spirit



- Écoles membres du réseau
- Écoles associées Polytech
 - ENSIM de l'Université du Mans
 - ESGT du Cnam au Mans
 - ESIREM de l'Université de Bourgogne
 - ISEL de l'Université Le Havre Normandie

The French group of 15 University graduate schools of engineering
www.polytech-reseau.org/en

DEPARTMENTS OF POLYTECH TOURS

Mechanics
Advanced Material Mechanics
System Design

Electronics
Electrical Energy Conversion
Micro Electronic Components

Sustainable Design

Power Electrics

Renewable energy and the Environment

Signal Processing and Automation

**MECHANICS
AND SYSTEM
DESIGN**



**ELECTRICAL
ENERGY
SYSTEMS**

**COMPUTER
SCIENCES**



**URBAN
PLANNING AND
ENVIRONMENT**

**INDUSTRIAL
COMPUTING**

Embedded systems
Programmable electronics
Control and industrial communications

Software Engineer
Science of Decision Making
Applied Mathematics and Modelling

Planning, Management,
Sustainable Development
Ecology, restoration of ecosystems

Apprentice

2 majors :
*Information System
Architecture, System and
network*

2 majors :
*Territorial Planning and Environmental
Engineering
River Ecosystems Engineering*



RESEARCH & PARTNERS



IUT
de Blois

COMMON RESEARCH LABS

LIFAT : Computer Sciences (CNRS)

LaMé : Mechanics

GREMAN : Micro/nanosystems, integration (CNRS)

CITERES (IPAPE team) : Project development/urban planning, and environment



INDUSTRIAL PARTNERS

200 industrial lecturers

5 joint research platforms that we share with Industrial organizations

Final year student projects and internships

“Company days” – University Business

Conferences given by professional speakers



EXCHANGE PROGRAM

For our **partner universities (for example Shibaura)** :

Fall/Spring semesters for each department with a choice of courses (Lecture, tutorials and practice) in English and supervised projects (by researchers or teaching staff)

Computer science	Mechanics	Electronics and energy	Urban planning and environment
Distributed Systems and Programming	Polymers Mechanics	Mathematics and signal processing	Approaches and studies in aquatic Ecology
Graph theory	Fluid mechanics	Power circuits	Eco-city development models
Machine learning and pattern recognition	Finite Element Methods	Data acquisition	Territorial Planning and Development Strategies
Project in Information Systems, AI or Distributed Systems	Fatigue of Materials	Digital communication systems	Fluvial morphodynamics and sediment transport (IMA 071)
Bio-inspired computing	Project : Product and system Design	Foundations of electronic circuits	Aquatic Biodiversity

Course examples

INTERNATIONAL RESEARCH MASTERS

Degree-seeking (1 year)

- [Master Electronics, Electrical Energy, Automatic](#)
- [Master Planning and Sustainability](#)



Campus life

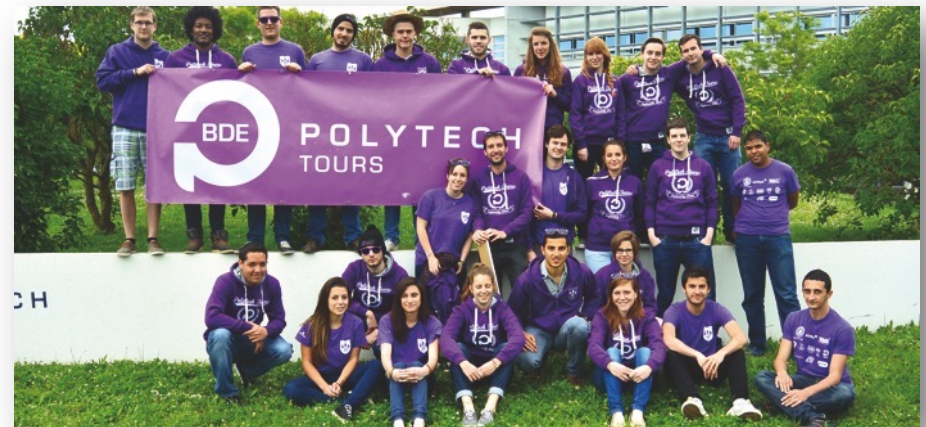


24h of innovation with AeroCentre



Student associations with :

- Sport clubs
- Robotic
- Music
- Projects (car, bridge)



An overview of Tours

<https://youtu.be/xONtVitvILU>



Blois at a glance

https://youtu.be/dk_x2VcT4n4



Social activities : visiting castles





Living expenses

Estimated semester costs	Tuition: none thanks to partnership between UT and SIT	Housing: Residence halls: 220€ to 405€/month Off campus apartment: 400€ to 750€/month
	Meals: 3€25 in a university restaurant	Transportation: Monthly bus pass: 27€60
	Books, Supplies: This depends on the classes	Insurance: accommodation: around 40/50€ (based on a residence hall)/year
Estimated amount in 2020	General expenses (accommodation + meals + leisure) approximately 700€-800€/month	
Optional fees	French courses for exchange students at CUEFEE: Free of charge in 2020-21, unless stipulated (see specific program guidelines)	

University accommodations

Example of accommodations

City	Surface	Include	Price per month
Tours	9 m ²	All (utilites, Internet)	255€
Tours	18 m ²	Internet	357€ + utilities
Blois	15 m ²	All	388€
Blois	Homestay option	Half board +	500€



<https://international.lescrous.fr/accomodation/>

Private student accomodations

<https://international.univ-tours.fr/english-version/welcome-to-ut/housing>



From 390€ to 575€ per month
Student accomodation with
kitchen and services
(1 student per apartment)



ref 481



Type	Loyer/mois	Surface	Frais de dossier
Logement individuel	à partir de 409 €	16 m2 min	à partir de 0 €

<http://housing.univ-tours.fr>

Arigatōgozaimashita soshite tsuāzu daig
aku ni ryūgaku shitekudasai !



Jean-Paul CHEMLA



Christine FARMER

