

ERASMUS+ PROGRAM

CREDIT MOBILITY BETWEEN POLAND AND JAPAN

Welcome to Warsaw University of Life Sciences – SGGW
Poland



SZKOŁA GŁÓWNA
GOSPODARSTWA
WIEJSKIEGO

AGENDA

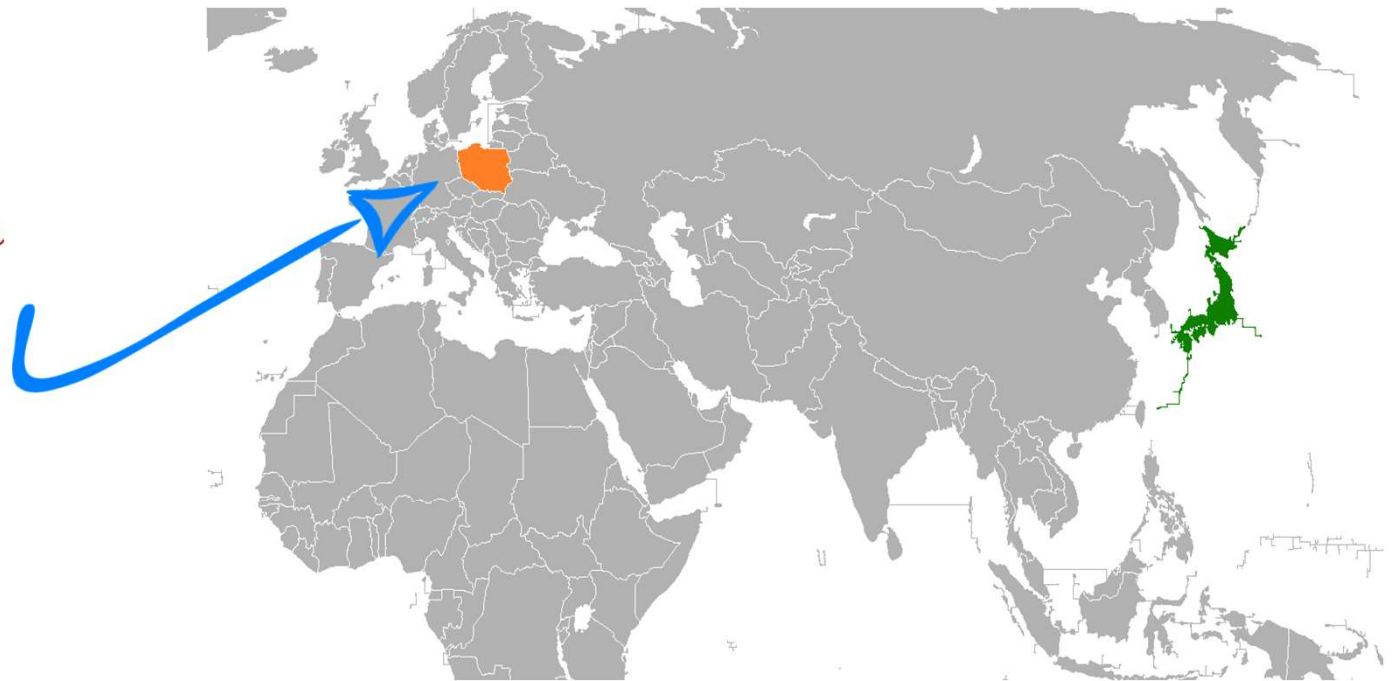
1. INFORMATION ABOUT POLAND AND WARSAW
2. INFORMATION ABOUT SGGW
3. ABOUT ERASMUS+ PROGRAM
4. OFFER FOR INCOMING STUDENTS



SZKOŁA GŁÓWNA
GOSPODARSTWA
WIEJSKIEGO

1 INFORMATION ABOUT POLAND AND WARSAW

Warsaw

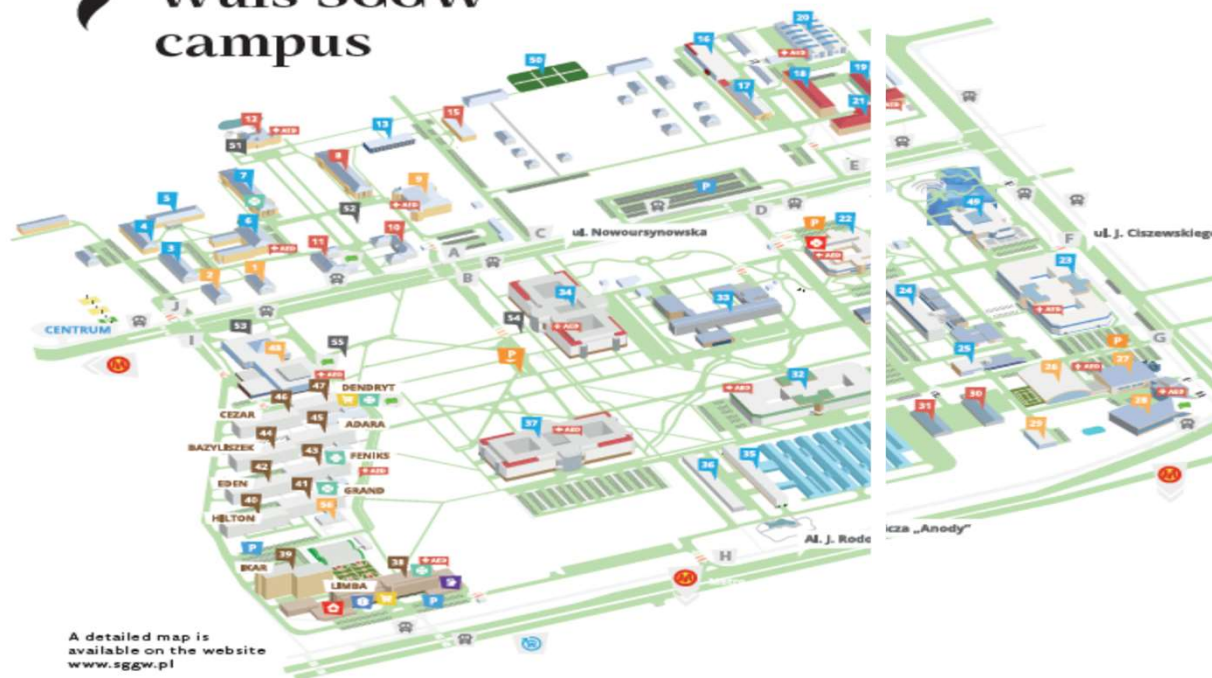


SZKOŁA GŁÓWNA
GOSPODARSTWA
WIEJSKIEGO

2 ABOUT SGGW

SGGW

 Wuls-SGGW
campus



SZKOŁA GŁÓWNA
GOSPODARSTWA
WIEJSKIEGO

2 ABOUT SGGW

SGGW IN RATINGS



SZKOŁA GŁÓWNA
GOSPODARSTWA
WIEJSKIEGO

2 ABOUT SGGW

WHY SGGW?

01

Very well equipped laboratories
good environment to study and research

02

A wide-range of courses in English

03

A place in student dorms for every incoming student

04

Mentor programme with ESN
including pick-up at the airport upon arrival in Warsaw

05

Welcome events
Orientation Day and another relevant events

06

Polish language course
beginner level

07

Great location
center of Poland and Europe

08

Great University Campus
sport centres, grocery shops, student cafeterias, buffets and much more!

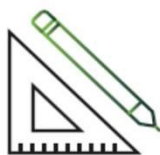


SZKOŁA GŁÓWNA
GOSPODARSTWA
WIEJSKIEGO

2 ABOUT SGGW



13 faculties



38 fields of study



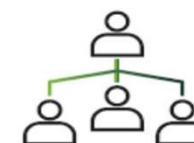
1,500 didactic rooms



300 classrooms



24 lecture halls



1,200 academic teachers



4,000 places in dorms



720,000 sqm campus



18,000 students



6 study programmes in English



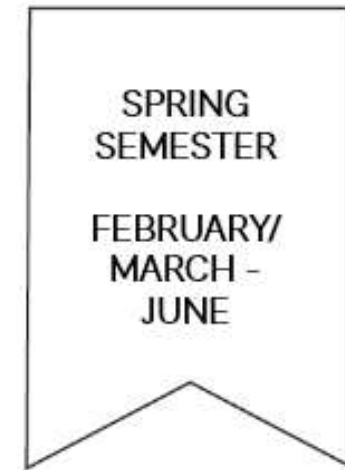
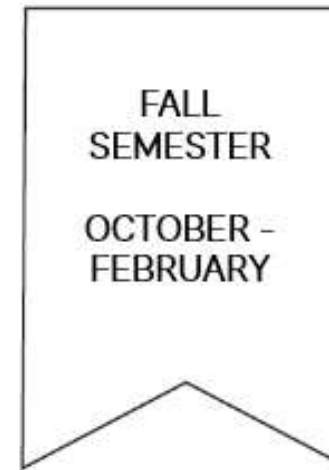
275 joint research and teaching with foreign universities and institutions



SZKOŁA GŁÓWNA
GOSPODARSTWA
WIEJSKIEGO

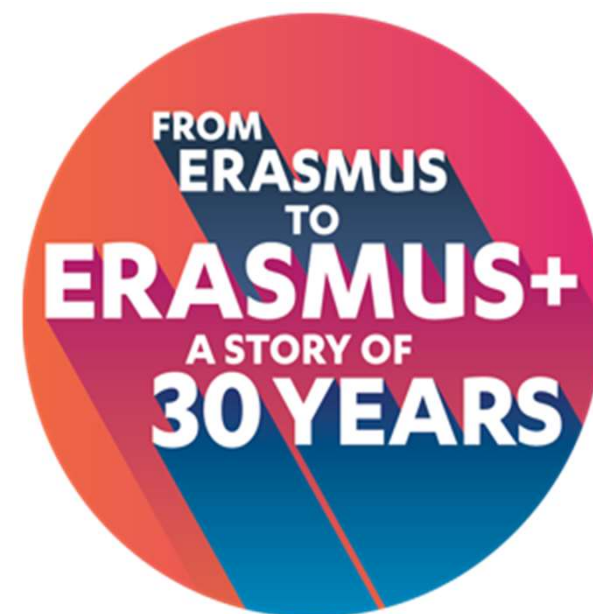
2 ABOUT SGGW

STUDY PERIOD AT SGGW



3 ABOUT ERASMUS+ PROGRAM

SCHOLARSHIP	800 EUR/month
TRAVEL COSTS	1500 EUR (round ticket)
ON CAMPUS ACCOMODATION	80-100 EUR/month double/triple rooms
MIN. ELIGIBLE PERIOD	3 months
ECTS	30 per semester



3 ABOUT ERASMUS+ PROGRAM

STUDY OFFER

MIX AND MATCH

HOW TO APPLY?

- 1 open the website and read carefully all information
- 2 prepare a learning agreement and collect other required documents
- 2 apply via [online platform](#)

WHAT NEXT

- 1 evaluation and official nomination
- 2 visa application
- 3 flight tickets and insurance policy
- contact with the ESN

AFTER ARRIVAL

- 1 opening a bank account
 - 2 signing an agreement
- 70% grant – first month of stay
30% grant – last month of stay



SZKOŁA GŁÓWNA
GOSPODARSTWA
WIEJSKIEGO

4 OFFER FOR INCOMING STUDENTS

ERASMUS STUDENT NETWORK – STUDENT HELPING STUDENTS

Taking care of International students
Orientation Week
Mentor/Buddy Program
Activities and events
Integration trips

<https://erasmus-sggw.pl/>



#ESN SGGW



@ESN.SGGW



SZKOŁA GŁÓWNA
GOSPODARSTWA
WIEJSKIEGO

4 OFFER FOR INCOMING STUDENTS

SGGW FOR STUDENTS

1

The Folk Art Group Promni

2

SQER Dance

3

Academic Choir

4

Chamber Choir

5

Academic Sports Association



SZKOŁA GŁÓWNA
GOSPODARSTWA
WIEJSKIEGO

4 OFFER FOR INCOMING STUDENTS

SGGW FOR STUDENTS

1

Indor swimming pool

2

Sport halls

3

Indoor tennis courts

4

Gym

5

Hippotherapy Center



SZKOŁA GŁÓWNA
GOSPODARSTWA
WIEJSKIEGO

ERASMUS+ TEAM
Ewelina Belkiewicz
Małgorzata Szczęsna

erasmusplus@sggw.edu.pl

<https://erasmusplus-world.sggw.pl/>
www.sggw.pl



IRO, Warsaw University of Life Sciences – SGGW



SZKOŁA GŁÓWNA
GOSPODARSTWA
WIEJSKIEGO